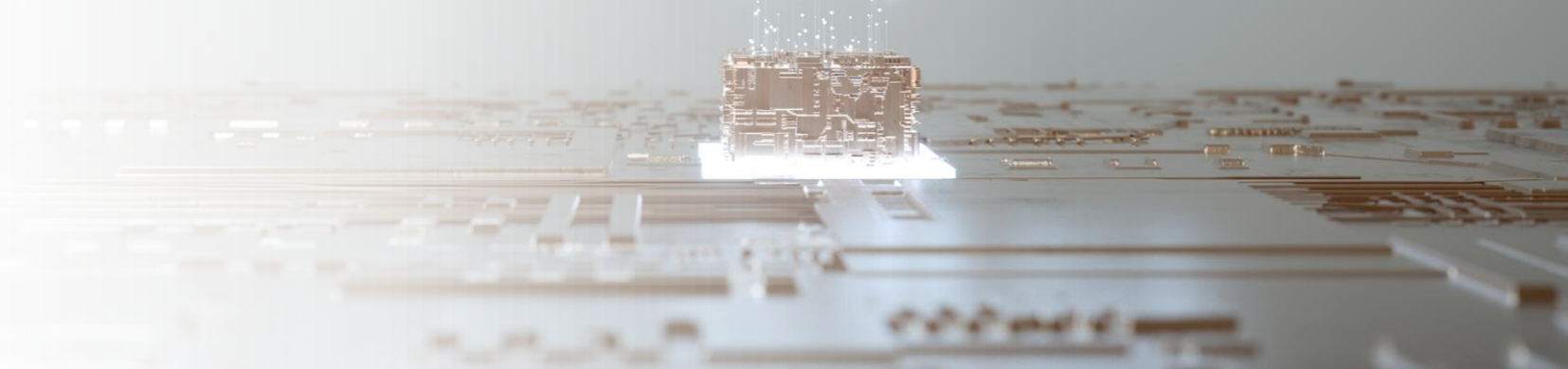
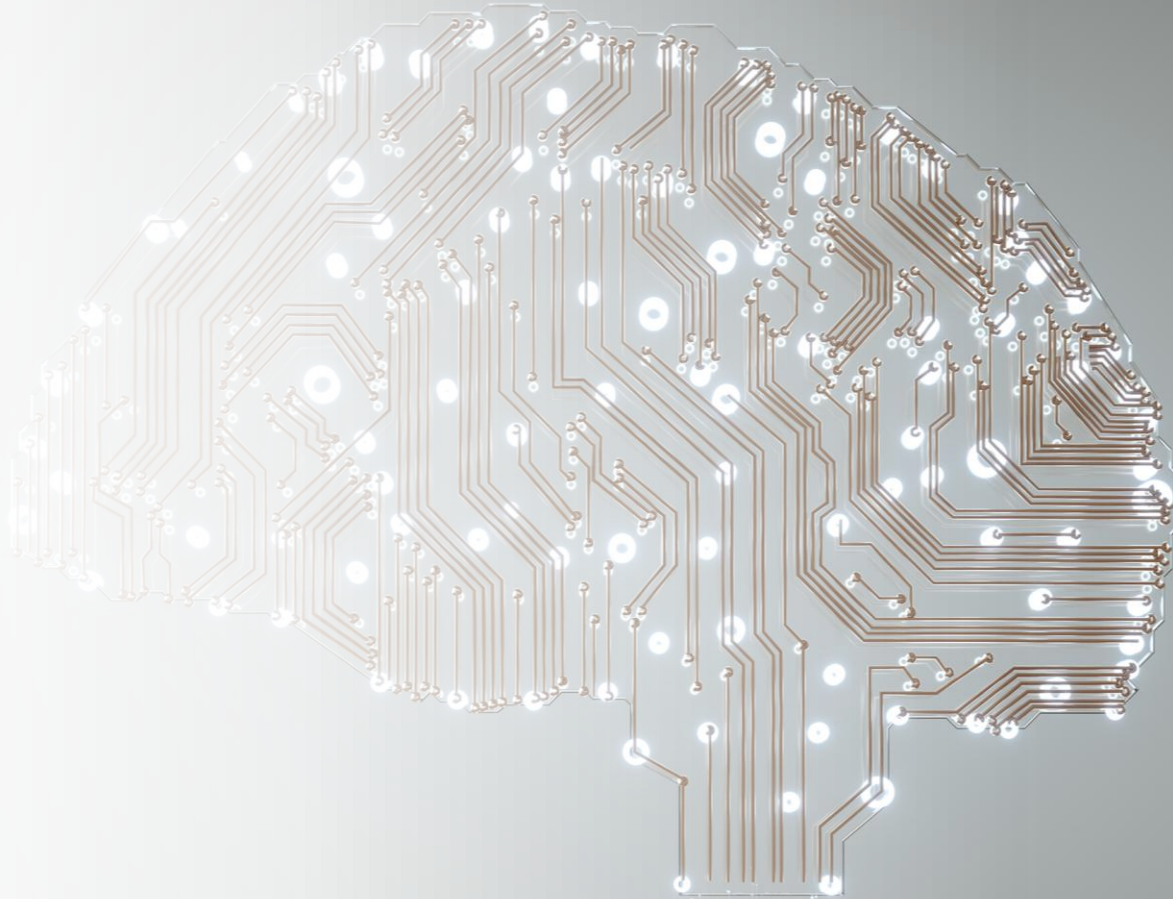
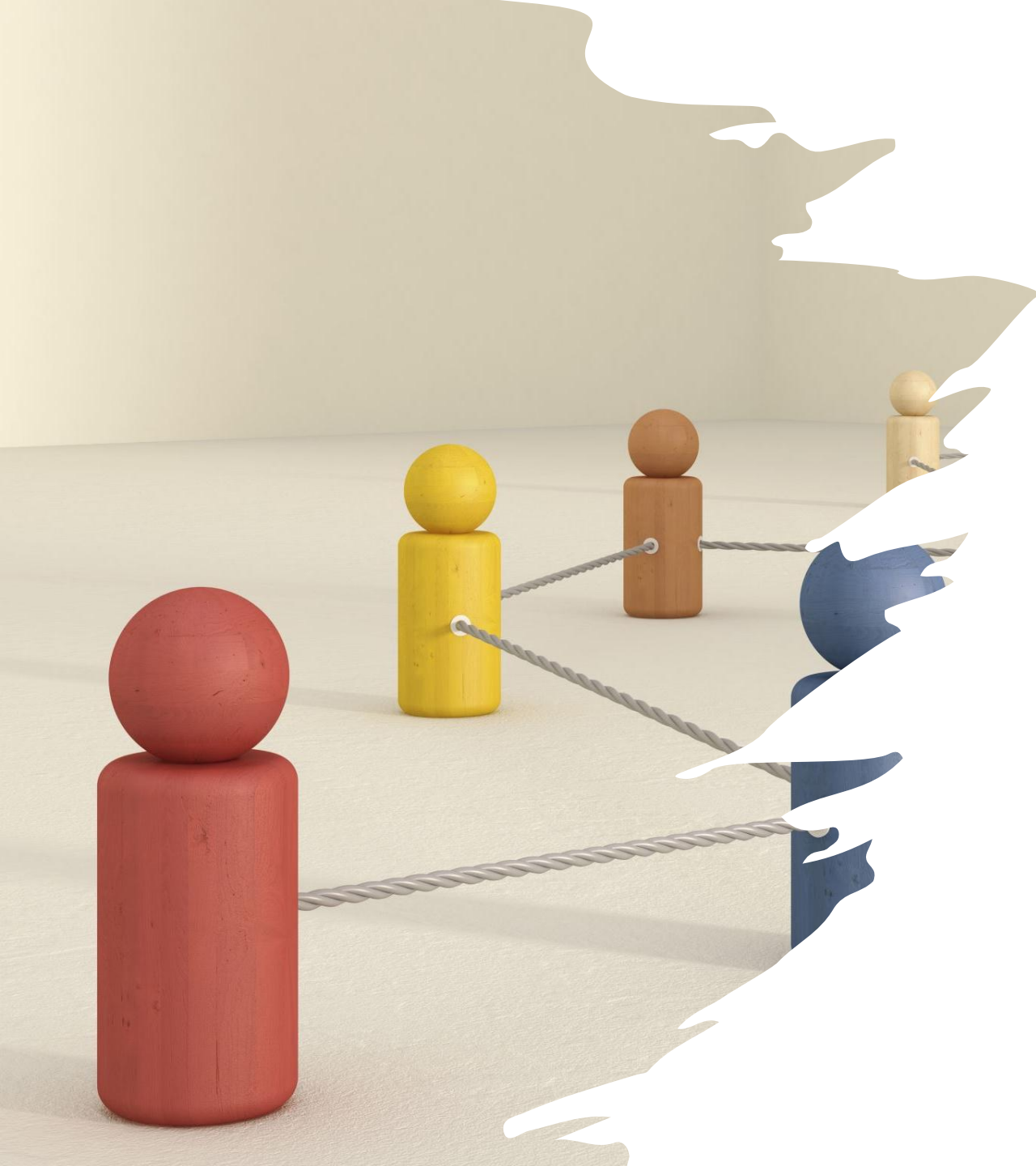


Achieving
Success through
Cross-Team
Collaboration





- How communication and shared goals break down silos
- How **anyone** can influence successful outcomes through better collaboration
- How Enterprise Architecture practices can help you to build trust and alignment (*even if you're not an architect*)

The evolution of Enterprise Architecture

- EA as an Enabler – proactive instead of reactive
- EA as collaborative, not controlling
- Always invite the missing voice
- Gather the facts and figures that enable sound decision-making
- Bridge the gap between technology and other functions
- Help ensure the organisation's best interests are always considered





The Challenge of Alignment

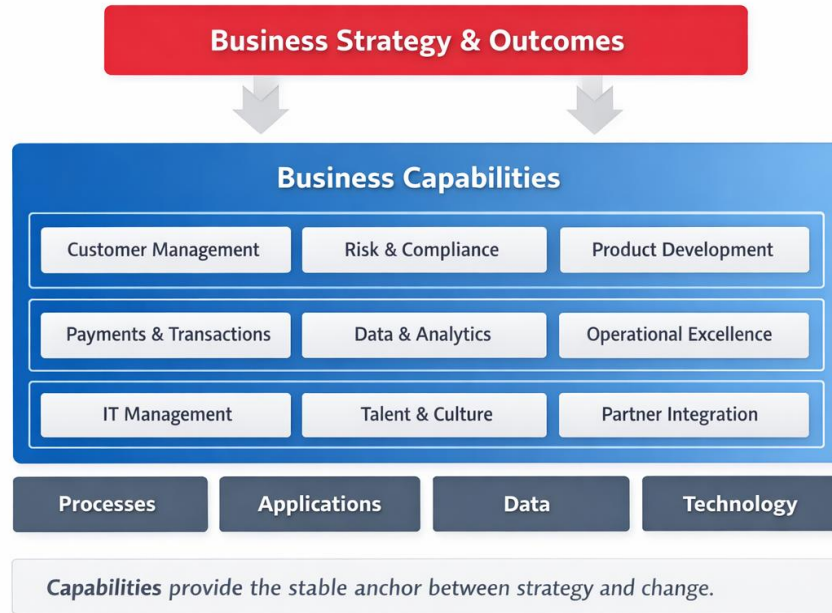


Use Enterprise Architecture practices to build trust

1. **Capability modelling → creation of a common language**
2. Strategy development → agree on your vision and goals
3. Define principles → faster decisions and easier conflict resolution
4. Document trade-offs, solution options, and decisions → that visibility builds confidence and prevents re-litigation

What is Capability Modelling?

A way of describing **what the organisation does** to execute its strategy— independent of people, process, and technology



Why it matters

- Links strategy to execution
- Exposes duplication and gaps
- Enables investment prioritisation
- Creates a shared language across business & technology

What it enables

- Clear ownership of business outcomes
- Better funding decisions
- Rationalisation of systems
- Structured transformation roadmaps



Use Enterprise Architecture practices to build trust

1. Capability modelling → creation of a common language
- 2. Strategy development → agree on your vision and goals**
3. Define principles → faster decisions and easier conflict resolution
4. Document trade-offs, solution options, and decisions → that visibility builds confidence and prevents re-litigation

What makes a good strategy?

- Context
- Vision
- Goals and Actions
- Measurements of Progress





Use Enterprise Architecture practices to build trust

1. Capability modelling → creation of a common language
2. Strategy development → agree on your vision and goals
- 3. Define principles → faster decisions and easier conflict resolution**
4. Document trade-offs, solution options, and decisions → that visibility builds confidence and prevents re-litigation

Architecture Principles

- **Aligned to the strategy**
- **Focus on the aspects that will have the most impact**
- **Defined to guide actions and decisions**
- **Statement, Rationale (the Why), Implications (the What)**





Use Enterprise Architecture practices to build trust

1. Capability modelling → creation of a common language
2. Strategy development → agree on your vision and goals
3. Define principles → faster decisions and easier conflict resolution
- 4. Document trade-offs, solution options, and decisions → that visibility builds confidence and prevents re-litigation**

Strengthen Communication Across Disciplines

- Agree on a shared language, and align around mutual goals
- Document *intent*, not just requirements
- Use visual models instead of long documents
- Shift the focus from outputs to outcomes
- Transparency matters → make options, decisions and trade-offs explicit (*documentation rules!*)
- Tailor communications to your audience and what they care about



Key Takeaways

- **Architecture is not just not a job title**

You don't need "Architecture" in your title to think architecturally. Anyone can create clarity, surface trade-offs, and connect work to outcomes to build alignment

- **Communication creates influence**

Shared language, visual thinking, and transparent decisions break down silos faster than authority ever will

- **Enterprise Architecture is about people, not just diagrams**

At its best, EA connects strategy to delivery, and builds trust across the organisation

- **Collaboration is a competitive advantage**

The organisations — and leaders — who align around shared outcomes move faster and deliver better results

